



PAPATOETOE HISTORICAL SOCIETY Papatoetoe Heritage Trail No. 3 Around Old Papatoetoe

This is one of three heritage trails covering the St George area of Papatoetoe (*South Side of St George Street, North Side of St George Street and Around Old Papatoetoe*). Begin this trail at the Methodist church in Kolmar Road and proceed towards St George Street.

In 1904 the Friedlander brothers named **KOLMAR ROAD** after the town in Alsace where their family had originated.



58. Papatoetoe's first **Methodist Church** was built on this site in a single day, on 12 December 1912. The present church was opened on 12 May 1962. The floor of the first church was reused in the Worship Centre or church lounge.

The first Papatoetoe Methodist Church, ca 1912 (Papatoetoe Historical Society collection)

ST GEORGE STREET was originally the eastern portion of Station Road, but was renamed St George Street in 1930.

59. In 1910 a Mr Worden built Papatoetoe's second general store on a site near the present-day junction of St George Street and Landscape Road. George Bryett bought the store in 1912, and sold it to his cousin, Mrs Katie Thompson in 1924. The building burnt down in 1986, and a service station was established on the site (since closed). The interior of Bryett's store is depicted in a mural near the entrance of the Papatoetoe City mall (see *Heritage Trail No. 1*, item 12).

LANDSCAPE ROAD was formed in 1921. It was named by Arthur Lipscombe after a street in Three Kings where his wife had lived.



60. An Anglican church hall was first established in St George Street in 1912. In 1921 the building was moved to the newly developed Landscape Road and extended. On 13 August 1922 it was dedicated to **St George the Martyr**. In December 1961 a new church building was opened. The old church, which had been shifted back on the section, then became the church hall, named the Davis Hall in honour of a former vicar. It now houses the church offices.

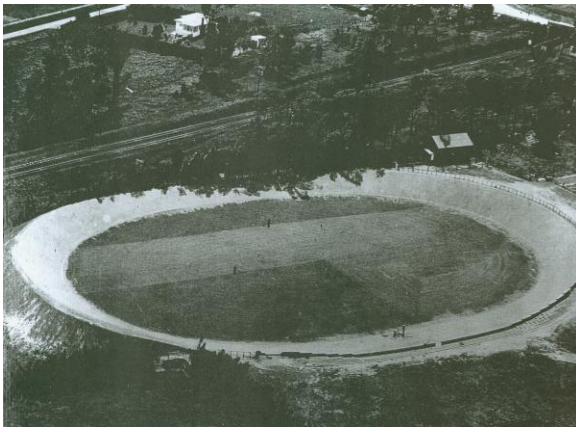
The Anglican Church of St George the Martyr in 1993, with the original church building to the left (Jenny Clark)

WALLACE ROAD was formed in 1912 (see *Heritage Trail No. 1*).

61. The old kauri homestead at 40 Wallace Rd dates back to 1912. It is sometimes known as **O'Loughlen's house** after its original owner. In 1979 the Roman Catholic Sisters of the Good Shepherd bought the house for use as a nuns' retirement home, and added to the building in the original style. The property was sold in 1995 and became a rest home. It is now a short-stay residential facility for the Pathways Trust.

62. In 1926 the Papatoetoe Town Board agreed to purchase a tract of land between Wallace Road and the railway line for recreation purposes. The Wallace Road Reserve was formally opened in February 1929, along with a band rotunda. A children's playground was opened here in November 1930. The stone walls and pillars that stand beside Wallace Road were built in 1932, at the time the stadium was developed (see the next item). Further development of the precinct took place over the years, for instance, an open-air roller skating rink was opened in 1959 (this was enclosed in 1976).

63. A sports stadium was built in a low-lying site near the railway line by relief workers during the Depression years. It was formally opened on 24 October 1932. The steeply



banked cycling track had six laps to the mile, and was regarded at the time as one of the best in the country. There was a 220-yard grass running track in the centre. During the Empire Games in 1950, the cyclists used the stadium as a training track. The local athletic club used to meet at the stadium until it moved to Omana Road in 1979.

The Papatoetoe stadium and cycling track, 1930s (Papatoetoe Historical Society)

64. In 1988 the Papatoetoe City Council started building a community and recreation centre on the site of the former sports stadium. This was completed after the amalgamation of Papatoetoe City and Manukau City in 1989, and was formally opened on 26 May 1990. (In August that year the Papatoetoe Light Opera Company also celebrated the opening of the Spotlight Theatre at the rear of the building.) In 1994 the complex was officially named the **Allan Brewster Recreation Centre** to honour the late Allan Brewster, the last mayor of Papatoetoe City (1986-1989). In 2009 Manukau Performing Arts began a major redevelopment of the Spotlight Theatre at the southern end of the building.

65. This was formerly the site of the Papatoetoe Women's Bowling Club, which established a green here in October 1952, a pavilion in 1957, and a second green in 1965. (In May 2007 because of falling membership, the club merged with the nearby RSA Bowling Club.)

66. In 1971 Papatoetoe City Council opened its new **works depot** in Cambridge Terrace. The depot became redundant after local body amalgamation in 1989. In 1998 it was redeveloped for use by community groups. One part of it now houses the Papatoetoe Historical Society's museum and archives.

67. The **RSA Bowling Club** was founded in 1954. The clubrooms house what is said to be the largest collection of bowling medals in New Zealand.

At the end of Tavern Lane, just before the Station Road bridge is the former Papatoetoe railway station building, moved here in 1999 (see *Heritage Trail no. 1: South Side of St George Street*, item 25; see also items 72 and 78).

68. In 1923 Papatoetoe's Presbyterians bought a plot of land here from the Orphan Home estate (see item 70). The Station Road Hall was opened as an outstation of St John's Presbyterian Church in 1925. It was given the name of St Martin's in 1956, and became the centre of a separate parish in 1959. The present **St Martin's Presbyterian Church** was opened on 5 September 1970, while the old church remains in use as the church hall.

69. On 20 December 1929 the small **triangular reserve** on the corner of Station Road and Wyllie Road was the scene of a special ceremony when Miss Sarita McLaughlin officially turned on the town's reticulated water supply. The water came from a bore sunk near McLaughlin's Mountain. The McLaughlin family agreed to allow the Town Board to take water for free for 100 years, and in return retained the right to walk their stock along



Papatoetoe residents' working bee on the Triangle Reserve. (1929).
Auckland Museum neg. no. C2771
December 2010.

the cattle route to the sale at Westfield.

The McLaughlin's Mountain bore provided most of Papatoetoe's water until 1953. It was demolished on 25 August 2010. The phoenix palm on the reserve was donated by Mr E.A. Price in 1930 and was moved 6 metres to allow for a cycle way in

KENDERDINE ROAD was named in 1923 in memory of Dr T.B. Kenderdine, one of the original founders of the Orphan Home (see item 70).

WYLLIE ROAD was originally the access way to Thomas Wyllie's farmhouse gate situated at what is now the corner of Pah Road. It was developed as a public road in 1912.



1926-30). Auckland Museum neg. no. B4839

70. In 1906 the Anglican Church bought 83.5 acres of rural land here for a new orphan home. The foundation stone of the **Orphan Home**, was laid on 12 December 1907. The first stage of the buildings, designed by the well-known ecclesiastical architect, George Selwyn Goldsbro', was formally opened on 1 May 1909. The chapel was completed in 1919, assisted by fundraising undertaken

Aerial view of the Church of England Orphanage, Wyllie Road, Papatoetoe (ca



by the orphans themselves, and the administrative block in 1923. The Orphan Home was closed in 1962, after which the site was used as a hostel for intellectually handicapped young people and a training school for nurses, renamed St John's Home. In 1992 the complex was sold to the Manukau Pacific Islanders Presbyterian Church of Aotearoa/New Zealand.

Former orphan home administration block 2009 (Jenny Clark)

71. The **Chapel of the Holy Saviour**, also built to a Goldsbro' design, was consecrated



on 1 April 1919. Among other historical relics in the building are a stone from Canterbury Cathedral in England, which was used for the foundation stone, and a piece of Marsden's cross. The altar was dedicated in May 1925 as a memorial to old boys of the home who had given their lives during World War I, as was a memorial cross to New Zealand nurses who had also made the supreme sacrifice. The chapel is listed as a category 1 historic place by the New Zealand Historic Places Trust.

Chapel of the Holy Saviour, Orphanage, Papatoetoe. (Date unknown). Auckland Museum neg. no.C15915.

STATION ROAD was one of Papatoetoe's earliest roads, running from the present-day school corner on Great South Road to Portage Road. It was named Station Road after the opening of the railway station in 1875. The two parts on either side of the railway line were unofficially referred to as Station Road West and Station Road East, and in 1930 the eastern portion was renamed St George Street.

72. The original railway station, built in 1875, was located on the eastern side of the line, roughly where the bridge now stands, with a goods shed on the opposite side of the tracks. In 1919 the station was moved to an island site slightly to the north (see item 78). The former **railway houses** between Station Road and the railway line were built in 1928.

73. **Papatoetoe West School** was opened on 1 February 1949.

74. In 1947 'Hillcrest', the old **Wyllie farmhouse**, dating from 1886, was shifted to 7 Hillcrest Road to make way for the school.

75. The Kauri Timber Company's yard was opened here in 1925 to store and dry timber cut at their mill in Fanshawe Street in Auckland City, as it was found to dry better in Papatoetoe than beside the Auckland waterfront. The yard was taken over by Fletcher's Timber in 1961, and closed in 1965.

76. Station Road originally crossed the railway line here as a level crossing. After the line was lowered in 1919 and the station was resited, a wooden road bridge was constructed across the line nearby and the level crossing was then replaced by a footbridge. (In 2005 the original footbridge was replaced and moved to a site on the Puhinui Stream near Aerovista Drive.)

77. The grove of **native trees** between the railway line and Station Road were donated by local residents and planted by the Town Board in 1933 to beautify the area. NZ Railways wanted to sell the land in 1990, but after representations from the Papatoetoe Historical Society, the area was retained as a reserve.

78. Papatoetoe railway station is now wholly a commuter station, but retains a few reminders of its former life as a thriving working station.



*The wagon loading bank was built in 1918. The railway station which used to stand here was closed in 1987. In 1999, by then in a semi-derelict state, it was moved across Station Road by the Papatoetoe Railway Station Preservation Trust, where it was restored by Mr Ray Strong and other members of the Papatoetoe Railway Station Preservation Trust. The refurbished building was formally reopened for community use on 31 October 2004.

The number 154 train from Papakura, WAB801, ca 1960 (photograph taken by David Sims as a schoolboy)

*The goods shed, also built in 1875, was relocated in 1918 to new site opposite the northern end of the platform. It burnt down in 1976.

*Stock yards and a stock loading ramp were once situated on the western side of the line further to the north.

*A turntable was installed near the end of Spring Street in 1946 and was in use until 1986. The turntable mechanism was moved to Glenbrook, but the original concrete pit can still be seen.

*The water tank and windmill were situated near the current safety road crossing. Part of the concrete foundation for the windmill is still there.

SHIRLEY ROAD. Mary Jane Grant named this road after her young nephew, Shirley Masters, when she subdivided her land in 1922.

79.Percy Pennell had a general carrier's depot and coal merchant's yard in Shirley Road, opposite the railway station. Part of the old corrugated iron shed can still be seen behind the mower shop.

80.The **Papatoetoe Masonic temple** was formally opened on 14 October 1930. (Lodge Papatoetoe No. 227 had been constituted in December 1921 and bought the section here in 1924.)



81.**Papatoetoe Cosmopolitan Club** opened its first clubrooms in Dunnotar Road in 1968. It opened new clubrooms on the corner of Rangitoto and Dunnotar Roads in April 1994.

Papatoetoe Cosmopolitan Club, ca 1987
(Papatoetoe Historical Society)

82.The Orange Renown Hall used to stand on this site. This was opened by Papatoetoe Men's Loyal Orange Lodge No. 117 in 1929. The building was also used for some years by the Manchester Unity Independent of Oddfellows (MUIOOF) and the Foresters' Lodge, and after 1954 by a Rebekah or ladies lodge. The Papatoetoe Cosmopolitan Club bought the hall in 1982 and demolished it to form a car park.

